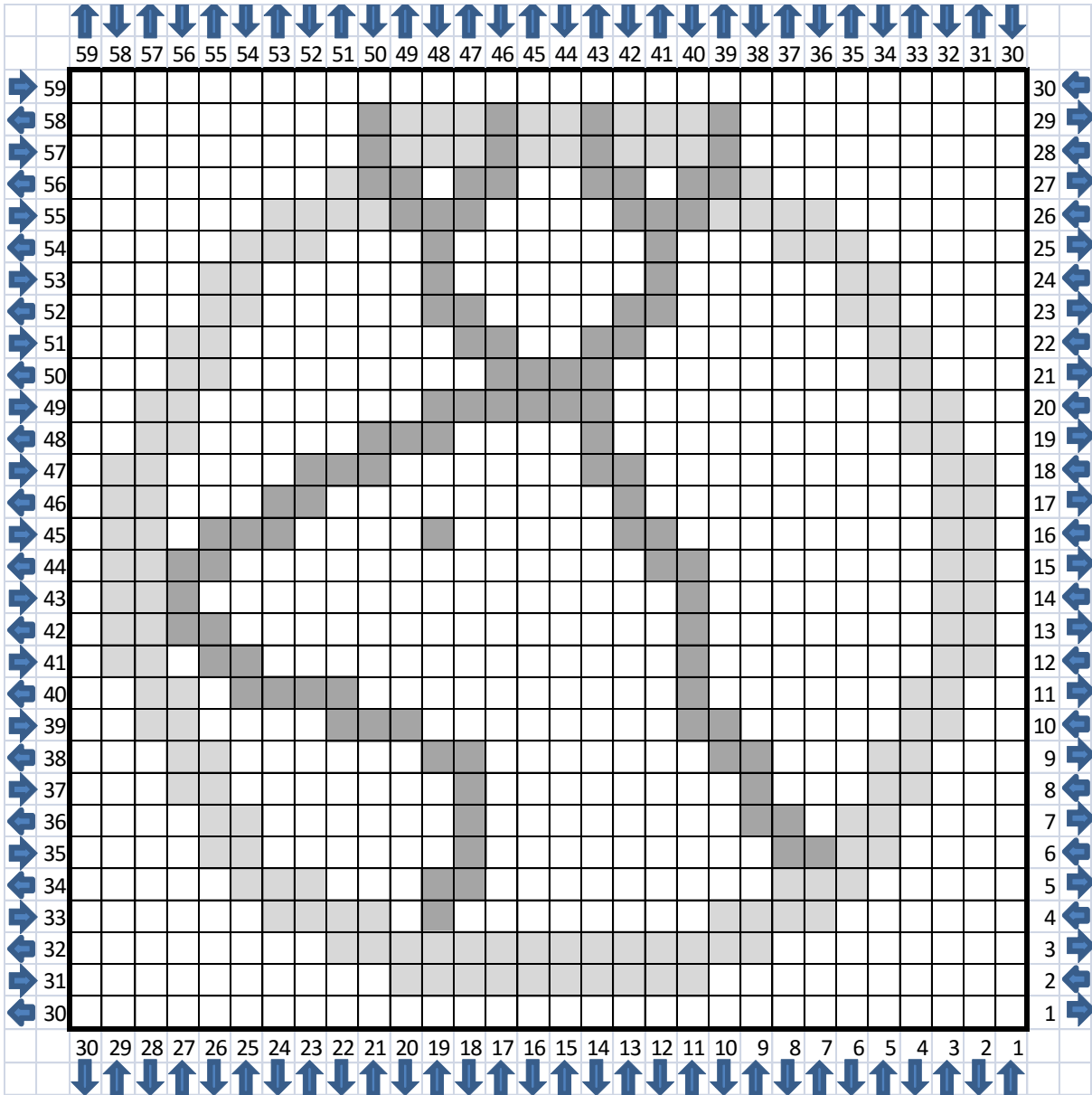


Outlander blanket – the Fraser Stag, by Nerdish Delights.



W=White (or background of your choice)

L=Light Grey

D=Dark Grey

Outlander blanket – the Fraser Stag, by Nerdish Delights.

Row 1: 1W (1)
Row 2: 2W (2)
Row 3: 3W (3)
Row 4: 4W (4)
Row 5: 5W (5)
Row 6: 6W (6)
Row 7: 7W (7)
Row 8: 8W (8)
Row 9: 9W (9)
Row 10: 4W, 3L, 3W (10)
Row 11: 2W, 6L, 3W (11)
Row 12: 2W, 4L, 1D, 4L, 1W (12)
Row 13: 1W, 3L, 1W, 1D, 2W, 4L, 1W (13)
Row 14: 1W, 3L, 3W, 1D, 3W, 2L, 1W (14)
Row 15: 1W, 2L, 3W, 1D, 5W, 2L, 1W (15)
Row 16: 1W, 2L, 5W, 1D, 4W, 2L, 1W (16)
Row 17: 1W, 2L, 5W, 1D, 5W, 2L, 1W (17)
Row 18: 1W, 2L, 6W, 1D, 5W, 2L, 1W (18)
Row 19: 1W, 2L, 6W, 1D, 6W, 2L, 1W (19)
Row 20: 2W, 1L, 7W, 1D, 6W, 2L, 1W (20)
Row 21: 1W, 2L, 7W, 1D, 7W, 1L, 2W (21)
Row 22: 2W, 2L, 6W, 1D, 6W, 2D, 1L, 2W (22)
Row 23: 2W, 1L, 1W, 2D, 6W, 1D, 6W, 1L, 3W (23)
Row 24: 3W, 1L, 6W, 1D, 6W, 1D, 2W, 2L, 2W (24)
Row 25: 3W, 1L, 3W, 1D, 6W, 1D, 5W, 2L, 3W (25)
Row 26: 4W, 1L, 6W, 1D, 5W, 1D, 4W, 1L, 3W (26)
Row 27: 3W, 2L, 3W, 1D, 6W, 1D, 6W, 1L, 4W (27)
Row 28: 4W, 2L, 6W, 1D, 6W, 1D, 3W (28)
Row 29: 4W, 1L, 4W, 1D, 6W, 1D, 6W, 1L, 5W (29)
Row 30: 5W, 1L, 6W, 1D, 7W, 1D, 3W, 1L, 5W (30)

Start decreasing

Row 31: 4W, 2L, 2W, 1D, 7W, 1D, 6W, 1L, 5W (29)
Row 32: 4W, 2L, 5W, 1D, 7W, 1D, 3W, 1L, 4W (28)
Row 33: 4W, 1L, 2W, 1D, 8W, 1D, 5W, 1L, 4W (27)
Row 34: 4W, 1L, 2W, 4D, 3W, 1D, 4W, 1D, 1W, 2L, 3W (26)
Row 35: 3W, 1L, 1W, 1D, 8W, 5D, 1W, 2L, 3W (25)
Row 36: 3W, 3D, 3W, 2D, 7W, 1D, 1W, 1L, 3W (24)
Row 37: 2W, 2L, 1D, 6W, 3D, 4W, 3D, 2W (23)
Row 38: 1W, 1D, 1L, 1W, 1D, 3W, 1D, 1W, 3D, 4W, 1D, 1W, 1L, 2W (22)
Row 39: 2W, 1L, 1D, 2W, 4D, 2W, 1D, 4W, 1D, 2L, 1W (21)
Row 40: 1W, 2L, 1D, 3W, 1D, 4W, 5D, 2L, 1W (20)
Row 41: 1W, 2L, 2D, 6W, 1D, 4W, 1D, 1L, 1W (19)
Row 42: 1W, 1D, 1L, 3W, 1D, 8W, 2L, 1W (18)
Row 43: 1W, 2L, 8W, 3D, 2L, 1W (17)
Row 44: 1W, 1L, 3D, 8W, 2L, 1W (16)
Row 45: 1W, 3L, 6W, 1D, 1W, 1L 1D, 1W (15)
Row 46: 1W, 2L, 1D, 1L, 4W, 4L, 1W (14)
Row 47: 2W, 4L, 1W, 2L, 1D, 2L, 1W (13)
Row 48: 1W, 1L, 1D, 6L, 3W (12)
Row 49: 4W, 3L, 2W, 1D, 1W (11)
Row 50: 10W (10)
Row 51: 9W (9)
Row 52: 8W (8)
Row 53: 7W (7)
Row 54: 6W (6)
Row 55: 5W (5)
Row 56: 4W (4)
Row 57: 3W (3)
Row 58: 2W (2)
Row 59: 1W (1)

Edging and finishing

Once you have completed your panel, you can continue on with the edging to save time when it comes to joining the panels later. After your final stitch to join the last block, chain 3 and then single stitch through the gap between the next blocks. Continue all the way around until you have edged all sides. When joining the panels later, you can use your joining method of choice with the chains you've just added. I also recommend weaving in ends once you've finished a panel, so you don't have a huge pile to work through at the end. I hate weaving them in, but it must be done!